

FEATURES

- ❖ Rugged, Stainless Steel
- ❖ Reusable
- ❖ Resists up to 500 PSIA
- ❖ Submersible to 150 ft
- ❖ Programmable start time
- ❖ Real-time operation
- ❖ N.I.S.T. traceable
- ❖ User-friendly
- ❖ Low cost

APPLICATIONS

- ❖ DOT maturity meter
- ❖ Concrete QA (prestress, precast and curing)
- ❖ Glass oven monitoring
- ❖ Autoclave verification
- ❖ Food preparation & processing
- ❖ Environmental studies
- ❖ Well monitoring
- ❖ Dish washer testing
- ❖ Medical / Pharmaceutical

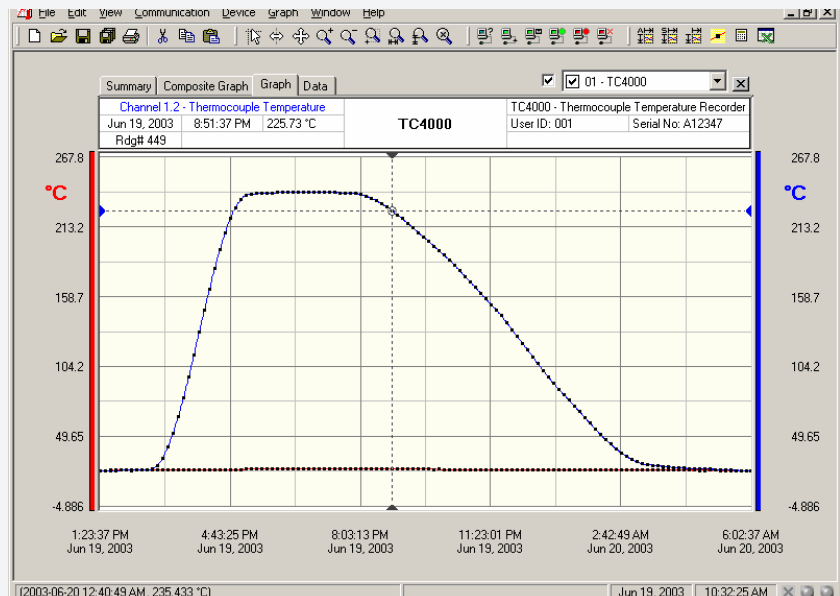
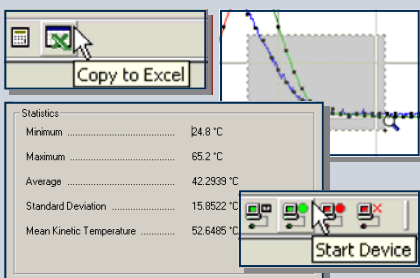


Whether you are looking for the most rugged, efficient **maturity meter** in the world, for the perfect tool to control the temperature during the processing of cured concrete or for a **waterproof, 2-channel temperature logger**, the Prototemp™ M will perform the task.

The Prototemp M is a rugged, waterproof, battery powered, thermocouple based temperature recorder. This is a stand-alone, compact, portable, easy to use device that will measure and record up to 16,383 measurements per channel. The storage medium is non-volatile solid state memory, providing maximum data security even if the battery becomes discharged. Its real time clock ensures that all the data is time and date stamped. The device can be started and stopped directly from your computer and its small size allows it to fit almost anywhere. The logger makes data retrieval quick and easy even from harsh environments. Simply plug it into an empty com port and our user-friendly software does the rest.

SOFTWARE

Evidencia's Data Recorder Software is an easy to use Windows-based software package that allows the user to effortlessly collect, display and analyze data. A variety of powerful tools allow you to examine, export, and print professional looking data with just a click of the mouse.



PROTOTYPE™ M SPECIFICATIONS

Internal Channel
Temperature Range: -40 °C to +125 °C
Temperature Resolution: 0.1 °C
Calibrated Accuracy: ±0.5 °C (0 to +50°C)

Remote Channel
Thermocouple Types: J,K,T,E,R,S,B,N
Thermocouple connection: Female subminiature (SMP)

Cold Junction Compensation: Automatic, based on internal channel

Thermocouple	Range (°C)	Resolution	Accuracy
	-210 to +760	0.1 °C	±0.5 °C
	-270 to +1370	0.1 °C	±0.5 °C
	-270 to +400	0.1 °C	±0.5 °C
	-270 to +980	0.1 °C	±0.5 °C
	-50 to +1760	0.5 °C	±2.0 °C
	-50 to +1760	0.5 °C	±2.0 °C
	+50 to +1820	0.5 °C	±2.0 °C
	-270 to +1300	0.1 °C	±0.5 °C

Start Time: Software programmable Start time and date. Up to six months in advance
Real Time Recording: May be used with PC to monitor and record data in real time

Memory: 16,383 readings per channel
Reading Interval: 1 reading every 2 seconds to 1 every 12 hours

Calibration: Digital Calibration through software
Calibration Date: Automatically recorded within device

Power: 3.6V lithium battery included

User Replaceable Battery: 1 year typical (1minute reading rate at 25 °C)

Data Format: Date and time stamped °C, °F, °K, °R

Time Accuracy: ±1 minute/month (at 20 °C, RS232 port not in use)

Computer Interface: PC serial or RS232C COM (Interface cable required); 2,400 baud

Software: Windows 95/98/ME/NT/2000/XP based software

Operating Environment: -40 °C to +125 °C, 0 to 100 %RH

Dimensions: 7.2" x 1.2" diameter (183mm x 30.5mm)

Weight: 13 oz (380 g)

PROTOTYPE™ M SOFTWARE FEATURES

Multiple Graphs:	Simultaneously analyze data from several units or deployments; easily switch to a single data series	Statistics:	Calculate averages, min, max, standard deviation, and mean kinetic temperature with the touch of a button
Real-Time Recording:	Collect and display data in real-time while continuing to log	Export Data:	Export data in a variety of common formats, or switch to Excel with a single click
Graphical Cursor:	One click displays readings by time, value, parameter or sample number	Calibration:	Fully digital calibration function automatically stores parameters in device
Data Table:	Instantly access tabular view for detailed dates, times, values, and annotations	Logger Configuration:	Easy set up and launch of data loggers with immediate or delayed start, preferred sample rate, and device ID
Scaling Options:	Autoscale function fits data to the screen, or allows user to manually enter their own values	Communications:	Automatically sets up communications port, or lets user set configuration
Formatting Options:	Change colors, line styles, plotting options, show or hide channels in an instant	Printing:	Automatically print graphical or tabular data

**As part of our commitment to continuous product improvement, Evidencia reserves the right to change product specifications without notice.

ORDERING INFORMATION

Model	Description
Prototemp M	Rugged Temperature Recorder
IFC110	Software, manual and 9-pin computer interface cable
N.I.S.T. Cert	N.I.S.T. Calibration Certificate

ASK ABOUT OUR OTHER DATA RECORDERS

Temperature	pH
Humidity	Level
Pressure	Shock/Vibration
Bridge/Strain	Submersible
Current	Intrinsically Safe
Pulse/Event	RF Transmitters
Voltage	Multi-parameter



505 Tennessee Street, Ste. 502, Memphis TN 38103, USA
 Phone: +1 (901) 529-9382
 www.evidencia.biz



Fax: +1 (901) 529-9197
 info@evidencia.biz