

### FEATURES

- ❖ Rugged
- ❖ Reusable
- ❖ Submersible
- ❖ Programmable start time
- ❖ Real-time operation
- ❖ User-friendly
- ❖ Low cost

### APPLICATIONS

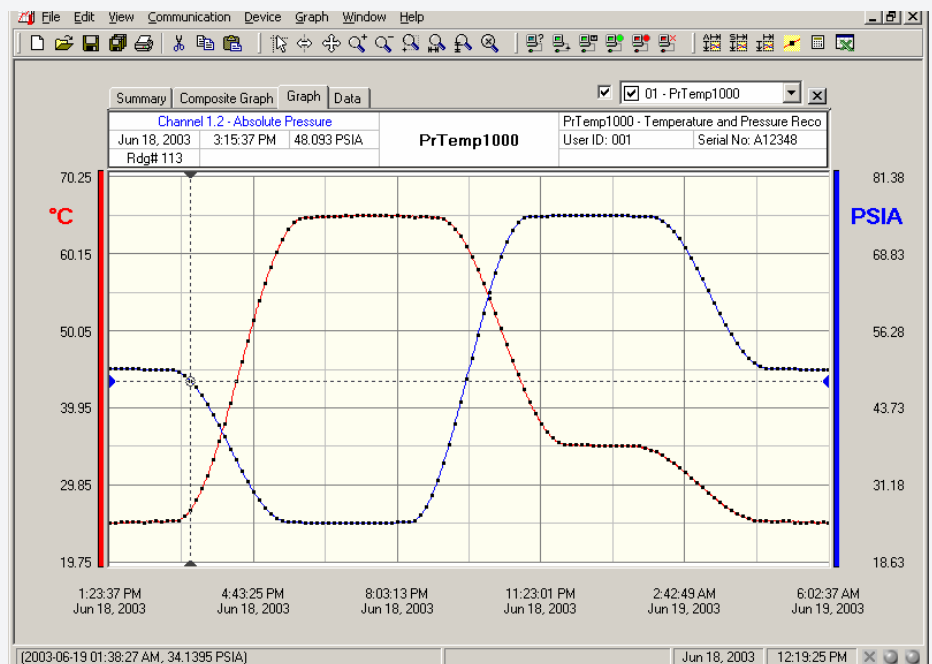
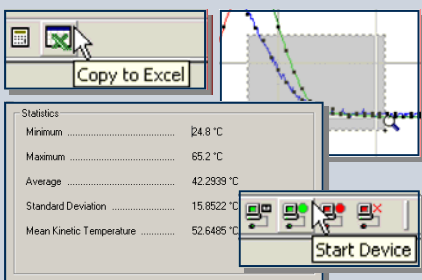
- ❖ Pneumatics
- ❖ Process control systems
- ❖ Gas compressors
- ❖ Natural gas production
- ❖ Lubrication systems
- ❖ Chemical processing
- ❖ Pulp and paper processing
- ❖ Medical instrumentation
- ❖ Environmental studies
- ❖ Waste water treatment
- ❖ HVAC
- ❖ Refrigeration
- ❖ Replace costly strip chart recorders



The Prototemp PR is a battery powered, stand-alone pressure and temperature data logger. This all-in-one compact, portable, easy to use device measures and records up to 16,383 pressure and 16,383 temperature measurements. The Prototemp PR accommodates numerous adaptors for various pressure ranges and pipe fittings. Its real time clock ensures that all data is time and date stamped. The storage medium is non-volatile solid state memory, providing maximum data security even if the battery becomes discharged. The device can be started and stopped directly from your computer and its small size allows it to fit almost anywhere. The Prototemp PR makes data retrieval quick and easy. Simply plug it into an empty com port and our user-friendly software does the rest.

### SOFTWARE

Evidencia's Data Recorder Software is an easy to use Windows-based software package that allows the user to effortlessly collect, display and analyze data. A variety of powerful tools allow you to examine, export, and print professional looking data with just a click of the mouse.



Demo our software at [www.evidencia.biz/downloads](http://www.evidencia.biz/downloads)

## PROTOTEMP™ PR SPECIFICATIONS

<b>Temperature Sensor:</b> Semiconductor	<b>Memory:</b> 16,383 readings per channel
<b>Temperature Range:</b> -40 °C to +125 °C	<b>Reading Interval:</b> 1 reading every 2 seconds to 1 every 12 hours
<b>Extended Temperature Range:</b> 80 °C to 125 °C; 15 minutes	<b>Calibration:</b> Digital calibration through software
<b>Temperature Resolution:</b> 0.1 °C	<b>Calibration Date:</b> Automatically recorded within device
<b>Calibrated Accuracy:</b> ±0.5 °C	<b>Power:</b> 3.6V lithium battery included
<b>Pressure Sensor:</b> Semiconductor strain gauge	<b>User Replaceable Battery:</b> 1 year typical
<b>Pressure Range:</b> 0 to 30 PSIA, 100 psia, 300 psia, 500 psia	<b>Data Format:</b> Date and time stamped °C, °F, °K, °R ; PSIA(g), inches, feet, mmHg, bar, Torr, kPa,
<b>Pressure Resolution:</b> .002 psia/g, .005psia/g, .02 psia/g, .05 psia/g	<b>Time Accuracy:</b> ±1 minute/month (at 20°C, RS232 port not in use )
<b>Calibrated Accuracy:</b> 0.2 % FSR, .25 % @ 25 °C typical	<b>Computer Interface:</b> PC serial or RS232C COM (Interface cable required); 2,400 baud
<b>Pressure Response Time:</b> 0.1 ms (10% to 90% FSR)	<b>Software:</b> Windows 95/98/ME/NT/2000/XP based software
<b>Repeatability:</b> ± 0.5 % FSR; ± 0.2 % typical	<b>Operating Environment:</b> -40 °C to +125 °C, 0 to 99% RH
<b>Adaptor:</b> 1/4" male NPT or fully submersible	<b>Dimensions:</b> 1.25" x 6.3" (32 mm x 165 mm)
<b>Start Time:</b> Software programmable start time and date. Up to six months in advance	<b>Weight:</b> 10 oz (285 g)
<b>Real Time Recording:</b> May be used with PC to monitor and record data in real time	

## PROTOTEMP PR SOFTWARE FEATURES

<b>Multiple Graphs:</b> Simultaneously analyze data from several units or deployments; easily switch to a single data series	<b>Statistics:</b> Calculate averages, min, max, standard deviation, and mean kinetic temperature with the touch of a button
<b>Real-Time Recording:</b> Collect and display data in real-time while continuing to log	<b>Export Data:</b> Export data in a variety of common formats, or switch to Excel with a single click
<b>Graphical Cursor:</b> One click displays readings by time, value, parameter or sample number	<b>Calibration:</b> Fully digital calibration function automatically stores parameters in device
<b>Data Table:</b> Instantly access tabular view for detailed dates, times, values, and annotations	<b>Logger Configuration:</b> Easy set up and launch of data loggers with immediate or delayed start, preferred sample rate, and device ID
<b>Scaling Options:</b> Autoscale function fits data to the screen, or allows user to manually enter their own values	<b>Communications:</b> Automatically sets up communications port, or lets user set configuration
<b>Formatting Options:</b> Change colors, line styles, plotting options, show or hide channels in an instant	<b>Printing:</b> Automatically print graphical or tabular data

\*\*As part of our commitment to continuous product improvement, Evidencia reserves the right to change product specifications without notice.

### ORDERING INFORMATION

Model	Description
Prototemp PR	Rugged Temperature Recorder
IFC101	Software, manual and 9-pin computer interface cable
N.I.S.T. Cert	N.I.S.T. Calibration Certificate

### ASK ABOUT OUR OTHER DATA RECORDERS

<b>Temperature</b>	<b>pH</b>
<b>Humidity</b>	<b>Level</b>
<b>Pressure</b>	<b>Shock/Vibration</b>
<b>Bridge/Strain</b>	<b>Submersible</b>
<b>Current</b>	<b>Intrinsically Safe</b>
<b>Pulse/Event</b>	<b>RF Transmitters</b>
<b>Voltage</b>	<b>Multi-parameter</b>



505 Tennessee Street, Ste. 502, Memphis TN 38103, USA  
 Phone: +1 (901) 529-9382 Fax: +1 (901) 529-9197  
[www.evidencia.biz](http://www.evidencia.biz) [info@evidencia.biz](mailto:info@evidencia.biz)

